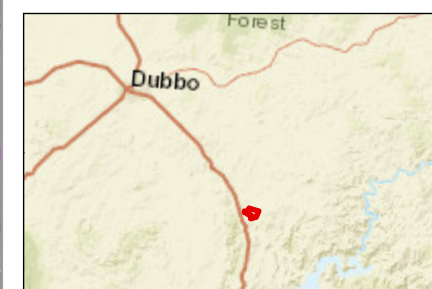


- Site access
- ▭ Project boundary
- ▭ Battery storage facility
- ▭ Proposed array
- ~ Proposed overhead transmission line: Option 1
- ~ Proposed overhead transmission line: Option2
- ~ Proposed overhead transmission line
- ~ Proposed underground transmission line
- ▭ Proposed road
- ▭ Proposed substation: Option 1
- ▭ Proposed substation: Option 2
- ▭ Temporary laydown and turning circle
- ▭ Temporary construction and office parking
- ▭ OAM building
- ▭ Proposed landscaping (grove)
- ▭ Proposed landscaping (5m wide planting)
- ▭ Foreground (1 km)
- ⚡ Substation
- ~ Local road
- ~ Existing transmission lines
- ▭ Farm dam / other water body
- ~ Minor drainage feature
- ~ Railway
- ▭ Cadastre

Proposed landscaping  
(5m wide planting, 50m  
each side of proposed  
access)

Proposed landscaping (5m wide planting)



0 100 200 400 m

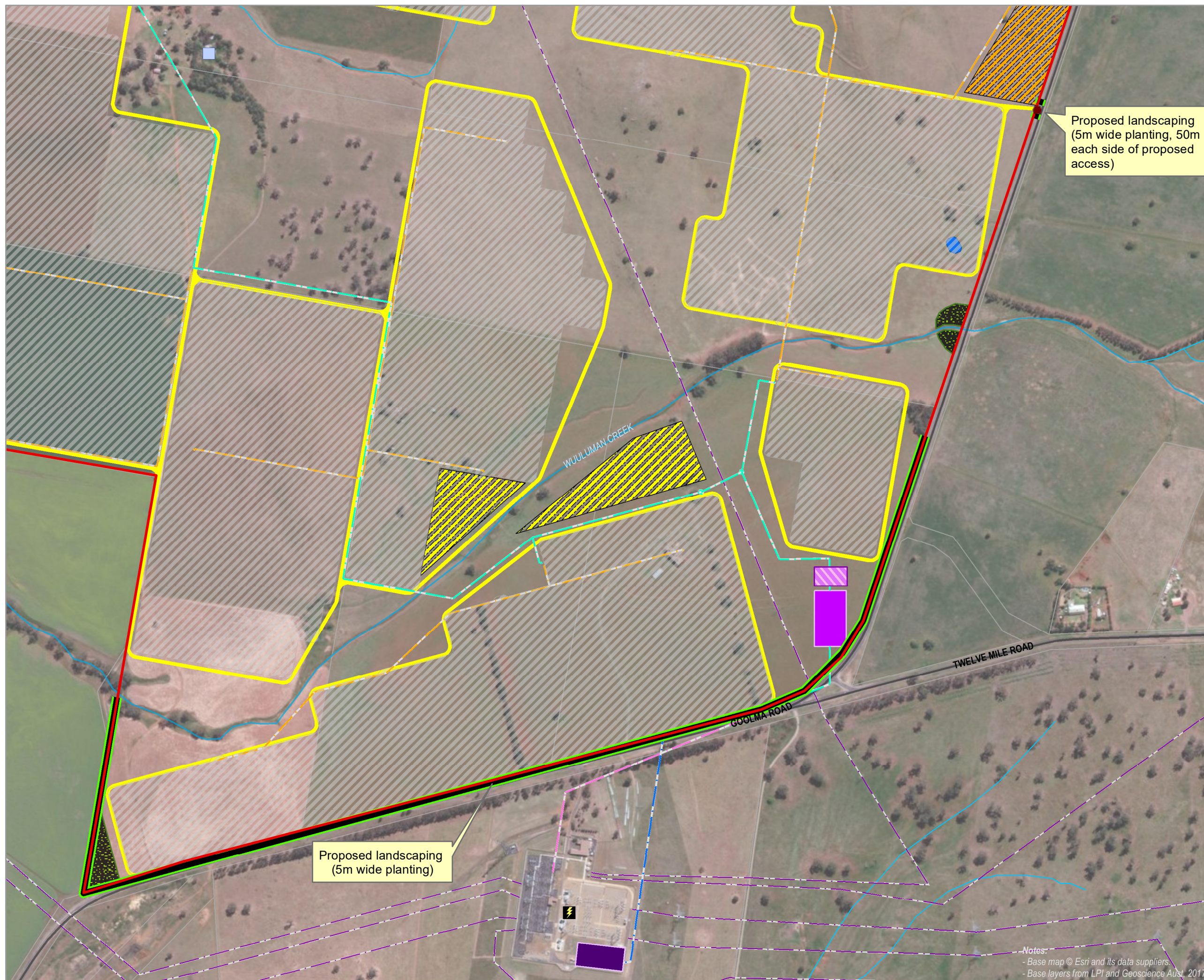
A3 @ 1:13000  
Ref: SW121 v20171106  
Author: SP Date: 6/11/2017



Notes:  
- Base map © Esri and its data suppliers.  
- Base layers from LPI and Geoscience Aust, 2017

www.nghenvironmental.com.au





- Site access
- ▭ Project boundary
- ▭ Proposed landscaping (5m wide planting)
- ▭ Battery storage facility
- ▭ Proposed array
- ▭ Proposed overhead transmission line: Option 1
- ▭ Proposed overhead transmission line: Option 2
- ▭ Proposed overhead transmission line
- ▭ Proposed underground transmission line
- ▭ Proposed road
- ▭ Proposed substation: Option 1
- ▭ Proposed substation: Option 2
- ▭ Temporary laydown and turning circle
- ▭ Temporary construction and office parking
- ▭ OAM building
- ▭ Proposed landscaping (grove)
- ⚡ Substation
- ~ Local road
- ~ Existing transmission lines
- ▭ Farm dam / other water body
- ~ Minor drainage feature
- ▭ Cadastre



0 50 100 200 m

A3 @ 1:7000  
Ref: SW121 v20171106  
Author: SP Date: 6/11/2017



Notes:  
- Base map © Esri and its data suppliers.  
- Base layers from LPI and Geoscience Aust. 2017

[www.nghenvironmental.com.au](http://www.nghenvironmental.com.au)